

2025

ANNUAL REPORT





VISION

The LTVCA...for a balanced and healthy watershed

MISSION

Leading by example in environmental protection in partnership with the community

CORE VALUES

Respect, integrity, commitment, objectivity, and collaboration

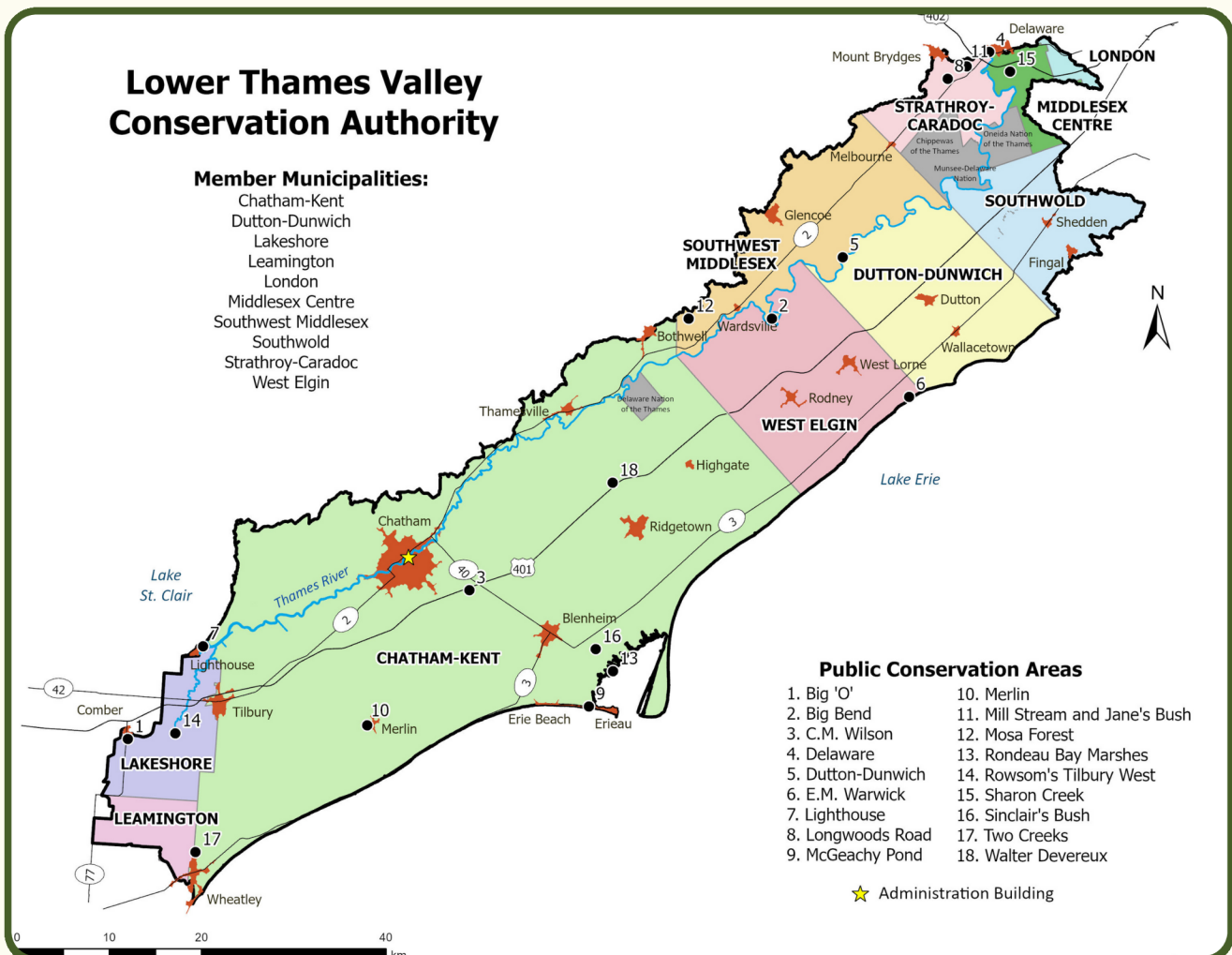


Table of Contents

Message from the Chair & CAO	3
Watershed and Information Services	5
Conservation Lands and Services	8
Corporate Services	14
Events	19
LTVCA by the Numbers	21
Awards	23



MESSAGE FROM THE CHAIR



I am proud to share the many accomplishments of the Lower Thames Valley Conservation Authority in 2025. Despite a year filled with major challenges for Conservation Authorities, the progress made was remarkable. Key milestones include the generous donation of the new Five Maples Conservation Area from the Stoss family in Southwold; the growth of the Precision Phosphorus Reduction Program, now supporting more than 90,000 acres of best practices; and new federal support for the Flood Hazard Identification and Mapping Program, which will help complete important flood plain studies across the watershed. We also celebrated the completion of upgrades to the Longwoods Road Resource Centre

and creation of the Indigenous Learning Centre, providing new spaces for classes, gatherings, and events for decades to come.

On October 31, 2025, the Government of Ontario announced plans to consolidate 36 Conservation Authorities into seven Regional Conservation Authorities. Under this proposal, the LTVCA would join the Lake Erie Regional Conservation Authority alongside seven others, with proposed boundaries extending from Cambridge-Waterloo to Sarnia to Windsor. This new regional organization would cover 81 municipalities and more than 2 million residents. While the Province stated this move would support consistent permit approval processes, shared services, and digital modernization, we strongly believe that these goals can be achieved through existing structures, without losing local conservation authorities and incurring the significant costs of consolidation.

Since their beginning, Conservation Authorities have been a bridge between provincial leadership and local municipalities, working together to protect and enhance the local environment for future generations. The LTVCA board remains committed to keeping the efforts of Conservation Authorities local and rooted in the communities we serve.

I extend my gratitude to our municipalities, community members and First Nations for their continued support. Many have shared letters and comments of support and passed resolutions that we hope will make a meaningful difference.

In 1946, Ontario recognized that local and provincial partnerships could strengthen watersheds and ensure healthier environments for the future. That vision still matters today. I encourage you to continue working with the Lower Thames Valley Conservation Authority to support local, community-based conservation.

A handwritten signature in blue ink that reads "Paul Tiessen". The signature is fluid and cursive, written in a professional style.

Paul Tiessen, Board Chair, Leamington

MESSAGE FROM THE CHIEF ADMINISTRATIVE OFFICER



It is my privilege and pleasure to serve as CAO for the Lower Thames Valley Conservation Authority. With many important projects and strategies underway, the LTVCA is helping shape a more connected, vibrant, and sustainable future. Over the past eight years, I have seen the LTVCA grow into a dynamic organization, with tremendous opportunities ahead.

In 2025, we continued to build on that growth. After a short initial start to the Precision Phosphorus Reduction Program in 2024, the LTVCA has completed its first full year of program implementation. The year saw strong progress and successful implementation of progressive farming techniques, monitoring of phosphorus runoff and building support for the program in the farm community. Urban communities also play an important role in this work. The Sustainable Neighbourhood Action Program (SNAP), delivered with the Municipality of Chatham-Kent is a proven solution for sustainable urban renewal that places neighbourhoods at the center of local environmental improvement. We look forward to seeing local neighbourhoods work together to achieve goals of urban environment stewardship.

I am grateful to work with a dedicated senior leadership team whose efforts, alongside all staff, help fulfil the direction of the Board and ensure that our strategic priorities are met. With our community, we continue to shape and improve the LTVCA watershed. When residents feel engaged and inspired, meaningful environmental improvement becomes possible. Together, we are building a healthy, thriving watershed for today and for the generations that will follow.

The greatest values are realized when we work together as a community. The LTVCA is community born and community driven. As we navigate a changing environment we remain committed to striving to meet the evolving needs of our residents now and into the future. In 2026, we celebrate 65 years of conservation, marking a significant milestone in our ongoing commitment to environmental stewardship.

Thank you for taking the time to learn more about the LTVCA, and I hope you enjoy all that our watershed has to offer.

A handwritten signature in black ink, appearing to read 'Mark Peacock'.

Mark Peacock, P.Eng,
Chief Administrative Officer/ Secretary-Treasurer

WATERSHED AND INFORMATION SERVICES



Watershed Management Services manages the risks associated with flooding and erosion while also monitoring water quality in the watershed. This is achieved through planning and permitting to ensure development is directed away from natural hazards. Water levels are monitored for flood risk and flood infrastructure is managed to mitigate flooding in downtown Chatham. Water quality is monitored for provincial programs for pollutants and algae.

WATER MANAGEMENT

Water Levels: Lake St. Clair and Lake Erie have finally returned to near normal after seven years of high lake levels. The year began with water levels slightly above normal, with Lake St. Clair about 25 cm above, and Lake Erie 15 cm above, their January mean water levels. Water levels rose in the spring and stayed slightly above normal before dropping back to near normal in August. Water levels on both lakes ended the year within 1 cm of the December mean water levels.

Low Water: Rainfall totals were acceptable in the lower Thames River watershed until the fall. However, the summer was dryer in the upper watershed and by September, a Low Water Level 1 Condition was declared based on reduced flows in the Thames River. Then in December the watershed was moved to a Low Water Level 2 Condition to finish the year.

Flooding: The main high flow event on the Thames River this year occurred in April. With the watershed already wet from prior rainfall, the region saw 35 and 50 mm of rain early April. As the peak flow on the river reached Chatham, the 6th St. Backwater Dam and Pumping Station was in operation for two days. Flows at Byron peaked at 665 m³/s near Dutton at 625 m³/s, and at Thamesville at 562 m³/s. Water levels in Chatham peaked at an elevation of around 178.63 m (CGVD28:78).

WATERSHED AND INFORMATION SERVICES



WATER QUALITY

Water Monitoring Groundwater monitoring is conducted at nine wells throughout the watershed, with the use of water level loggers and supplemental rain and barometric pressure loggers at some locations. The provincial stream water quality sampling is conducted at 11 locations throughout the watershed. LTVCA collects the samples monthly and the provincial lab performs analyses for general water chemistry. This program is supplemented by an additional 11 locations across the watershed. By expanding the network to 22 locations and sampling during the winter months, a better understanding of water quality can be achieved as winter and spring months have shown to be the time where most nutrients and contaminants are transported to the Great Lakes. This program is further supplemented with pesticide monitoring at three sites during the spring, summer and fall. New automatic samplers (ISCOs) were installed at three locations to further enhance program data collection.

Benthic Macroinvertebrates: Sampling for benthic macroinvertebrates (insects, worms and crustaceans that live at the bottom of the stream) was conducted by LTVCA staff in April and May. Samples are analyzed by the University of Windsor. The species richness of benthic organisms is another indicator of water quality.

Algae Blooms: The western Lake Erie cyanobacterial bloom was considered a mild bloom this year. Satellite imagery detected some in the water offshore of the LTVCA in the second week of September. One algae bloom was reported at the Rivard Pump Station, staff took a grab sample and sent away for analysis. The bloom was determined to not be toxic. McGregor Creek had two small blooms, samples of the September bloom were taken and sent away for analysis. Results showed low levels of microcystins just above the detection limit identifying the bloom as a cyano bloom. Finally, a bloom was reported in Wheatley Provincial Park and a sample was sent to the lab with the results returning as non-toxic.

WATERSHED AND INFORMATION SERVICES



PLANNING AND REGULATIONS

Permits



601 Received
792 issues

Landowner
Inquiries



4,593

Legal
Inquiries



86

Violations



21

Land Use Planning & Regulations: The land use planning and regulations program directs development away from hazardous areas to reduce hardship, loss of property / possessions and to aid in the protection of life. Reducing the impacts of human activities (development / infill) along and within natural hazard areas provides for unimpeded flood and erosion processes to occur without interference or impacts to structures from the hazards. Education of the public and our member municipalities is key to helping maintain these areas in a natural state so that they continue to provide an incalculable service on the landscape.

Municipal Plan Input & Review Under the Conservation Authorities Act: Planning staff dealt with 189 municipal planning submissions in 2025 (OP's, ZBL's, OPA's, ZBLA's, CZBL's, Severances, Minor Variances, subdivisions, and SWM reviews) as it relates to Provincial Policy and Section 28 of the Conservation Authorities Act. Planning numbers as well as legal inquiries are down slightly from 2024, but landowner inquiries were up significantly for this reporting year.

CONSERVATION LAND AND SERVICES



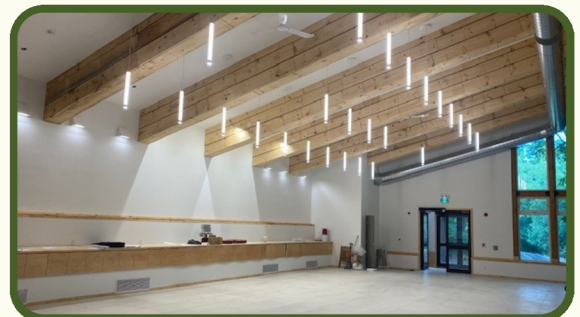
Conservation Lands and Services protect, manage and restore lands within the watershed. This is achieved within conservation areas through protecting and managing lands and offering nature based activities such as hiking and paddling. Our stewardship and agriculture department actively implements best management practices and natural restoration on private and public lands.

CONSERVATION AREAS

Construction and Renovations: Through the year many updates were made to facilities, a few highlights are the new LULA Lift Elevator at the Longwoods Road Learning Centre and the new lab space for the water quality team.

Water Systems: Longwoods Road CA and C.M. Wilson CA also received updates to their water systems. The updated system comes with a pressurized system, UV Filtration and a substantial increase in the reservoir tanks to help feed the growing needs of the facilities at C.M. Wilson facility.


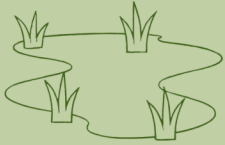


New Conservation Areas: Two generous donations were added to the watersheds conservation lands. The Ward Erie Outlook Conservation Area is a one acre property looking over Lake Erie donated by Brent and Marie Ward. A 73 acre property in Southwold was donated by the Stoss Family. With the help of the Township of Southwold, Five Maples Conservation Area will become a great place for outdoor recreation.



CONSERVATION LANDS AND SERVICES



RURAL STEWARDSHIP

<p>Afforestation</p>  <p>109 acres 36 projects</p>	<p>Wetlands</p>  <p>9 acres 21 projects</p>	<p>Tallgrass Prairie</p>  <p>121 acres 37 projects</p>	<p>Seedlings Sold</p>  <p>71,225</p>
--	---	--	--








ALUS

CHATHAM-KENT

<p>Acres</p>  <p>140 New Acres</p>	<p>Funding</p>  <p>\$679,040 Invested</p>	<p>Projects</p>  <p>50 New Projects</p>	<p>Impact</p>  <p>453 Acres to Date</p>	<p>Farmers</p>  <p>37 New Participants</p>
---	--	--	--	---

CONSERVATION LANDS AND SERVICES

ALUS Middlesex

Acres	Funding	Projects	Impact	Farmers
 151 New Acres	 \$700,000 Invested	 33 New Projects	 987 Acres to Date	 27 New Participants

ALUS ELGIN

Acres	Funding	Projects	Impact	Farmers
 33 New Acres	 \$150,761 Invested	 24 New Projects	 880 Acres to Date	 9 New Participants

CONSERVATION LANDS AND SERVICES



URBAN STEWARDSHIP

Large Stock
Sold



1808

Invasive Removal
Events



5

Pollinator
Gardens



6

Volunteers



444 Volunteers
961 Hours



CONSERVATION LANDS AND SERVICES



SPECIES AT RISK

Fish and Mussels: Temperature and dissolved oxygen monitoring continued at 13 Thames River, two Rondeau Bay tributary and one Big Creek subwatershed station. New methods made the units easier to deploy and retrieve. Data logged at 5-10 minute intervals from summer through fall provides information on the conditions that fish and mussel species at risk (SAR) experience, aiding in recovery planning.

Factsheets: Native / Non-native Lamprey, Redhorse / Redhorse Look-alikes, Fishing in Rondeau Bay and seven aquatic plant Invasive Species Alert! factsheets, as well as three Aquatic Species at Risk guidebooks (Fish, Mussels and Threats) were distributed in the Rondeau Bay watershed and Mitchell's Bay area, as well as through events.

Biodiversity Area Report: Staff contributed to development of a Key Biodiversity Area report for Mosa Forest led by Birds Canada and The Wildlife Conservation Society Canada.

Outreach: Presentations regarding the LTVCA's Multifaceted Approach to Aquatic Species at Risk Conservation was delivered to the Society of Canadian Aquatic Sciences while An Aquatic Species at Risk Threat Assessment and Prioritization Exercise for the Lower Thames Valley Conservation Authority Watershed was presented at the international Freshwater Mollusk Conservation Society Symposium.



CONSERVATION LANDS AND SERVICES



AGRICULTURE PROGRAMS

BMPs
Implemented



96,679
Acres

Water Samples
Collected



138 (PPRP)
273 (ONFARM)

Lower Thames River Watershed Precision Phosphorus Reduction Program: 2025 marked the second year of the four-year Canada Water Agency funded project to reduce phosphorus and overall nutrient loads to Lake Erie. Highlights of the year include over 90,000 acres of BMPs implemented and an educational video series interviewing farmers on BMP implementation and showcasing staff discussing regional water sampling.

OMAF-A-COA: The Canada–Ontario Agreement on Great Lakes Water Quality and Ecosystem Health (COA) supports the protection and restoration of Great Lakes water quality. A two-year, funding agreement was secured to the LTVCA through the Ontario Ministry of Agriculture, Food and Agribusiness (OMAF-A) to improve information on agricultural land use, soils, and management practices.

On-Farm Applied Research & Monitoring (ONFARM) Program: LTVCA continued to conduct environmental and agricultural monitoring to support the objectives of the ONFARM program. At the three long-term edge-of-field sites, monitoring continued to assess how agricultural practices are affecting water quality and soil health.

Phosphorus Reduction Tank Research Trial: In the fall, a new research trial began with the installation of gel flocculant in the LTVCA edge-of-field phosphorus reduction tank. In partnership with the OMAF-A and Clear Flow Group, the study evaluates the effectiveness of gel blocks in removing phosphorus from tile runoff and quantifying changes in nutrient loads.

CORPORATE SERVICES



Corporate Services oversees the provision of essential services that support departments across the LTVCA. The Finance, Administration, and Communications programs collaborate to ensure that LTVCA delivers its services both effectively and efficiently. Educational programs are offered to students and community groups through a two-eyed seeing approach, which integrates traditional and scientific knowledge.

EDUCATION PROGRAMS

Lake Erie Education: During the 2025/26 school year the Education Team has been supporting a multi-conservation authority education program focused on Western Lake Erie, which is being funded by the Ministry of Environment, Conservation, and Parks. The theme is connecting, caring, and sharing for Lake Erie. The LTVCA team will be visiting 4 classes, 4 times, throughout the school year for in-class learning. Four further classes will be participating in a stewardship action. The in-class and stewardship actions, across all watersheds, will reach approximately 1000 high school students.

C.M. Wilson Learning Centre (CMWLC): A 5-year Strategic Plan for the CMWLC has been developed which features ways to enhance and expand programming and events. Through this strategic plan “Roots & Renewal: A Naturalized Transformation of the Safety Village” was developed to help guide the conversion of the space previously managed by the Chatham-Kent Safety Village. The intention will be for the space to feature a gathering place and Three Sisters garden. Outreach for feedback from the community and local First Nations took place throughout the year.

Longwoods Road Education: Despite not being able to provide education programs at Longwoods Road Conservation Area from January until mid-March, the remainder of the year was thoroughly booked.

CORPORATE SERVICES



SKA-NAH-DOHT VILLAGE AND MUSEUM

Renovations: Through the renovations of the Longwoods Road Resource Centre the Ska-Nah-Doht Museum also underwent some revitalization. As a result, the Museum was closed to the public until the end of August. A soft launch of the revitalized Museum took place from September to the end of the year.

Donation: The Museum received a generous donation of exhibit structures and programming materials from the London Children's Museum who recently moved to a new building and went through construction of their own. This in-kind donation equates to approximately \$30,000 in support.

Rematriation: A portion of a likely post-contact dugout canoe was transferred to the Muskoka Discovery Centre in Gravenhurst, ON as part of Ska-Nah-Doht Village and Museum's policy of rematriation of objects requested by their home communities. This move will allow local Indigenous community members to have access to the canoe as they work with the Muskoka Discovery Centre on knowledge sharing projects. We are pleased that the canoe has made it's way back to it's home region.



CORPORATE SERVICES



COMMUNICATION

Newsletter
Subscribers



885

Facebook
Followers



4,049

Instagram
Followers



1,492

Conservation Areas Guidebook: It was a big year for communication enhancements starting with 2025-2026 Conservation Areas Guidebook. This publication is a quick guide to each public Conservation Area in the LTVCA watershed. It showcases activities available, location and hours of operation of each CA.



The River Report: The LTVCA Newsletter has proved to be a great tool for promotions and updates. It is sent out approximately 5-8 times per year and sees an average open rate of 60%. It also has finally received a name, The River Report, see photo to the right.



Website: A website overhaul was completed this year with the help of Chatham Creative Co. The website is not only visually appealing but intuitive for navigation.



CORPORATE SERVICES



OUTREACH



Clay Seed ball making at the **Nature CK Youth Day**



PPRP Team at the SRSCIA's **Compaction Day**



Booth at the **Southwestern Agriculture Conference**



Booth showcasing education programs at **Heritage Fair**



Presentation about species at risk at the **Great Lakes Clean Up**



Agriculture Program Coordinator, Donna Small being recognized for her work with PPRP at the **Royal Agricultural Fair**



Educating grade threes about soil at University of Guelph Ridgetown Campus' **Harvest Days**

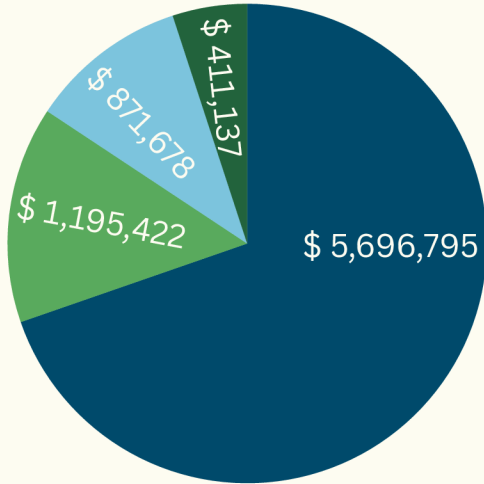


Staff sharing information on stewardship programs at **Red Barn Brewing's Farmfest**

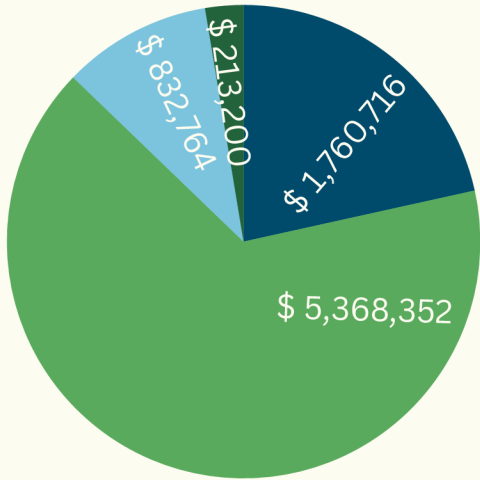
CORPORATE SERVICES



FINANCIAL SERVICES



- Conservation Services (70%)
- Water Management Services (14%)
- Conservation Lands (11%)
- Corporate Services (5%)



- Apportionment (22%)
- Grants (65%)
- Self-Generated (10%)
- Special Apportionment (3%)

EVENTS



Big “O” Birding held every May and this year Wild Ontario brought a Saw-Whet Owl, a Red Tailed Hawk and a Barred Owl



Conservation Authorities Bonspiel was hosted by the LTVCA in November



Three **Tree Giveaways** were held this year and over 400 trees were handed out to landowners



ALUS Chatham-Kent PAC at the **ALUS National Conference** held in Chatham-Kent



Announcement of the donation of 73 acres to become the new **Five Maples Conservation Area**



Students at the **Chatham-Kent and Lambton Children’s Waterfest**



Tallgrass Prairie information session with local Author Rick Gray



5th Annual Cultivating Conservation Tour hosted in the Western part of the Watershed, mainly in Wheatley and ending at Two Creeks CA for dinner



Breakfast and BMPs, a new outreach event hosted for farmers to learn about agriculture funding

BOARDS AND COMMITTEES

LTVCA BOARD OF DIRECTORS

Chair

Paul Tiessen (*Municipality of Leamington*)

Vice Chairs

Sarah Emons (*Township of Southwold*)

Trevor Thompson (*Municipality of Chatham-Kent*)

Amy Finn (*Municipality of Chatham-Kent*)

Michael Bondy (*Municipality of Chatham-Kent*)

John Wright (*Municipality of Chatham-Kent*)

Ken Loveland (*Municipality of Dutton Dunwich*)

Larissa Vogler (*Municipality of Lakeshore*)

Paul Van Meerbergen (*City of London*)

Hugh Aerts (*Municipality of Middlesex Centre*)

Martin Vink (*Municipality of Southwest Middlesex*)

Sandi Hipple (*Municipality of Strathroy-Caradoc*)

Richard Leatham (*Municipality of West Elgin*)

CHATHAM-KENT & LAMBTON CHILDREN'S WATERFEST

Chair

Glenn Smith

Janice Boose

Glenn Smith

Stephanie Peltier

Don Hector

SKA-NAH-DOHT VILLAGE AND MUSEUM ADVISORY COMMITTEE

Chair

Williem Bruinink

Vice Chair

Christopher Parker

Pamela-Lynne Chrisjohn

Tom Cobban

Don Fairbairn

Sandi Hipple

Ken Loveland

Mark Peacock

C.M WILSON LEARNING CENTRE ADVISORY COMMITTEE

Larissa Vogler

Amy Finn

Mark Peacock

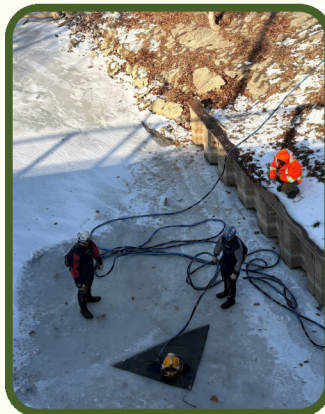


LTVCA BY THE NUMBERS

Conservation Areas		2023	2024	2025
Total Land Holdings (Hectares)		704	704	755
Total Taxes for Landholdings		\$ 54,046	\$ 57,621	\$ 58,888
Total Campers		29,952	30,371	31,552
Day Use Visitors (C.M. Wilson)		5,577	4,508	5,685
Day Use Visitors (Longwoods)		13,401	14,185	12,306
Day Use Visitors (Sharon Creek)		3,630	1,911	2,113
Total Parking Passes Sold		343	346	251
Stewardship		2023	2024	2025
Seedlings Sold		71,210	66,191	71,225
Total Acres of Habitat Restored	Trees	83	57	109
	Wetland	5	19	9
	Prairie	40	321	130
Total Number of Projects	Trees	49	27	36
	Wetland	9	21	21
	Prairie	19	30	38
New ALUS Participants	Chatham-Kent	12	19	37
	Elgin	14	29	9
	Middlesex	30	44	27
Total ALUS Acres	Chatham-Kent	23	60	140
	Elgin	72	53	33
	Middlesex	150	131	151
Urban Stewardship Events		24	30	34
Agriculture Programs		2023	2024	2025
Participating Farm Businesses		51	81	263
Funding Provided to Farm Businesses		\$138,062.50	\$309,429.00	\$2,202,792.50
Cover Crops Planted (Acres)		8,900	10,631	20,446
BMPS Implemented PPRP (Acres)		N/A	10,631	96,679

LTVCA BY THE NUMBERS

Planning and Regulations		2023	2024	2025
Permit Applications Received		460	1,108	601
Permits Issued		451	715	792
Planning Applications		416	195	189
Landowner Inquiries		1,091	3,228	4,593
Legal Inquiries		61	91	86
Average turn around time for permits (days)	Routine Development	3.5	12	2
	Minor Development	14	23.5	26
	Major Development	n/a**	n/a**	109
Hearings		0	0	0
Violations/Potential Violations		21	28	21
Water Quality		2023	2024	2025
Number of Surface Water Samples		404	377	583
Number of Pesticide Samples		N/A	173	219
Number of Benthic Monitoring Sites		12	10	12
Number of Algae Inspections		86	90	101
Corporate Services		2023	2024	2025
Students Participating in Education Programing		5,049	5,105	4,097
Facebook Followers		3,483	3,766	4,049
Instagram Followers		1,258	1,352	1,492
Newsletter Subscribers		N/A	N/A	885



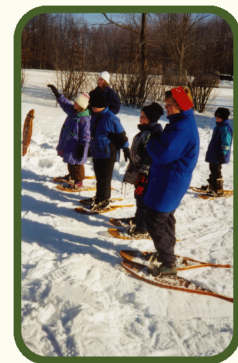
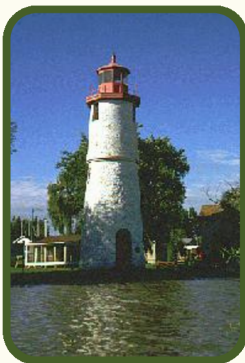
65 YEARS OF CONSERVATION

*Lower Thames
Conservation*



Community Born • Community Driven

65th Anniversary: February 2, 2026, marks the 65th Anniversary of the Lower Thames Valley Conservation Authority. Throughout the years, we have undergone significant transformations and have expanded our programs and services. From our inception, Conservation Authorities have been both community-born and community-driven, a commitment that remains steadfast. Our communities are the foundation of our efforts, enabling us to achieve remarkable milestones, including the planting of over 70,000 trees, the implementation of best management practices across more than 90,000 acres, and the processing of over 600 permits in 2025. In celebration of this milestone, a new logo will be unveiled in 2026, drawing inspiration from the design used between 1975 and 2015, as well as elements from our current logo.



ENVIRONMENTAL AWARDS



Most Dedicated Organization Community Living Chatham-Kent

Since 2022, Community Living Chatham-Kent has generously volunteered each summer, dedicating their time and energy to removing invasive species and collecting litter throughout Chatham. Their consistent efforts have made a meaningful difference in improving habitat health, enhancing public spaces, and demonstrating the power of community-led conservation. We are grateful for their continued dedication and the positive impact they bring to our watershed.



Most Dedicated Landowner Geraldine Hind

In the last five years Geraldine Hind, with the help of her tenant farmer has restored approximately 14 acres of marginal land into a thriving ecosystem including native plants and wetlands. These initiatives play a pivotal role in restoring wildlife habitat, reducing sedimentation and retaining nutrients; meanwhile protecting the Thames River. Geraldine has shown to be an exemplary steward of the land.



Volunteer Heroes Award The Gore Family

Bob, Derek and Brett Gore have been volunteering at the Chatham-Kent and Lambton Children's Waterfest since 2017. They help with many of the logistics of the Festival including setup, take down, lunch and cleaning up at the end of the day .

PARTNERS



The LTVCA is grateful for our partners whose financial, in-kind, and volunteer support makes our achievements possible..

THANK YOU

Member Municipalities
ALUS Canada
Canada Water Agency
Canadian Agricultural Partnership
Chatham Kent Community Foundation
Canadian Wildlife Federation
Desjardin
Dillon Consulting Limited
Ducks Unlimited Canada
Eco Canada
Elgin Clean Water Program
Elgin Reforestation
Elgin Stewardship Council
Enbridge
Environment & Climate Change Canada
Fisheries and Oceans Canada
Friends of the St. Clair River
Forest Canada
Greenfield Global
Government of Ontario
Invasive Species Centre
IODE
Kiwanis Club of Rodney

Lambton Kent District School Board
London's Children's Museum
McKinlay Funeral Home
Ministry of Agriculture, Food and Agribusiness
Ministry of the Environment, Conservation & Parks
Ministry of Tourism, Culture and Gaming
Ontario Federation of Anglers and Hunters
Ontario Soil and Crop Improvement Association
Ridge Landfill Community Trust
Sarnia Community Foundation
St. Clair Catholic School Board
Sunrise Rotary
TD Friends of the Environment
TD Tree Days
Together CK
Tourism HR Canada
Trees for Life
Tree Canada
Ursuline Sisters
Waste Connections Canada
Wildlife Habitat Canada

Heartfelt thanks to the **Lower Thames Valley Conservation Foundation** for their financial support of the LTVCA and stewardship of the Memorial Tree Program.

STAFF

Mark Peacock – CAO/Secretary-Treasurer

Genevieve Champagne – Manager, Conservation Lands and Services

Jason Wintermute – Manager, Watershed and Information Services

Todd Casier – Manager, Corporate Services

Full-Time Staff

Adam Gibb – Western District Supervisor
Agnes Vriends – Administrative Assistant
Alison Klages – Curator, Ska-Nah-Doht Village and Museum, Team Lead Education
Alyssa Broeders – Urban Stewardship Technician
Amanda Blain – Communications Specialist
Amanda Doucette – Agricultural Outreach and Communications Technician
Amber Frak – Water Quality Technician
Andrew Mickle – Agricultural Stewardship Specialist
Brittney Littlefield – Soil & Water Quality Technician
Daniel Okubay Tewolde – Engineer in Training
Donna Small – Agricultural and Phosphorus Reduction Program Coordinator
Elizabeth Arango Ruda – Water Resource Analyst
Greg Van Every – Conservation Services Coordinator
Holly Blondeel – Administrative Assistant, Planning and Regulations
Jason Homewood – Water Resources Technician and Regulations Officer
Kally Casier – HR Coordinator and Corporate Services Assistant
Leah Ripley – Agricultural Program Administrative Assistant
Mariah Alexander – Indigenous Community Educator
Masen Kankula – Western District Lead Hand
Michael Young – Wetlands and Stewardship Technician
Mike Shore – Eastern District Supervisor
Nicole Clark – Eastern District Lead Hand
Randy Kirby – Watershed Monitoring Specialist
Rashel Tremblay – ALUS Chatham-Kent Program Lead and Stewardship Technician
Robert Guo – Planning Technician
Russell Vey – ALUS Elgin Program Lead
Sarah Rabideau – GIS Technician
Tyler French – Indigenous Community Educator
Tyler Thornton – Eastern District Stewardship Technician
Valerie Towsley – Watershed Resource Planner
Vicki McKay – Species at Risk Biologist

Part-Time/Contract Staff

Ani Pearn – Agricultural Technical Assistant
Annabel Cairns – Conservation Area Ranger, Eastern District
Brihanna Schiller-Glover – Conservation Area Ranger, Western District
Callia Collard – Conservation Area Ranger, Western District
Dorothy Li – Conservation Area Ranger, Western District
Elise Gabrielli-Schroeder – ALUS Middlesex Program Director (*on leave*)
Erica Ion – Interim ALUS Middlesex Program Director
Graham Moddle – ALUS Middlesex Program Coordinator
Gabriel Argenti – Reforestation Maintenance Technician
Ian Gauthier – Watershed Monitoring Assistant
Jennifer Marshall – Conservation Area Ranger
Lukas Munn – Reforestation Maintenance Technician
Mitchell Boggs – Conservation Educator
Rebecca Adema – ALUS Middlesex Environmental Program Assistant
Rowan Deckert – ALUS Middlesex Monitoring and Research Co-op
Sarah Cook – Conservation Area Ranger, Western District





100 Thames Street
Chatham, ON N7L 2Y8

(519)354-7310

www.ltvca.ca

